

To arrange a viewing contact us
today on 01268 777400



Southbourne Grove, Westcliff-On-Sea Guide price £450,000

Guide Price £450k-£475k

Located on the sought-after Southbourne Grove, this beautifully presented three-bedroom semi-detached home offers spacious interiors, quality finishes, and excellent local amenities.

Inside, enjoy hardwood flooring throughout, a bright open-plan lounge/diner, modern kitchen, utility area, and convenient ground floor W/C. Upstairs features three double bedrooms and a contemporary family bathroom.

The west-facing private rear garden provides the perfect space to relax.

Just a 5-minute walk to Chalkwell Park and within easy reach of Chalkwell Station, this home is ideally positioned for families and commuters alike.

www.aspireestateagents.co.uk

Entrance Hall

Lounge

12'07 x 11'06 (3.84m x 3.51m)

Dining Area

12'01 x 10'07 (3.68m x 3.23m)

Kitchen

11'10 x 9'07 (3.61m x 2.92m)

Utility Area

7'06 x 6'02 (2.29m x 1.88m)

W/C

Landing

Bedroom One

14'00 x 9'11 (4.27m x 3.02m)

Bedroom Two

12'01 x 9'11 (3.68m x 3.02m)

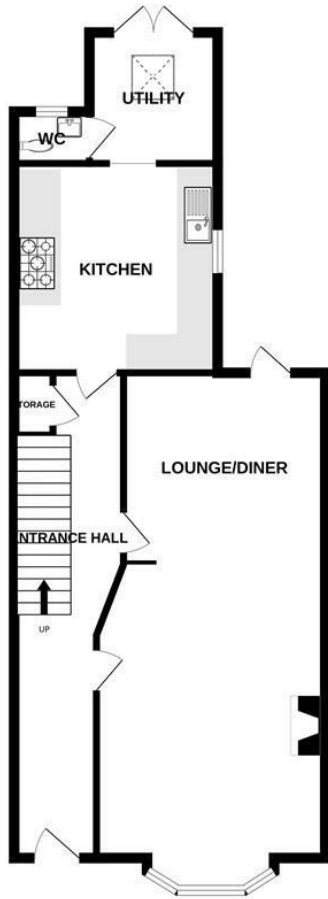
Bedroom Three

11'09 x 11'05 (3.58m x 3.48m)

Bathroom

Rear Garden

GROUND FLOOR
673 sq.ft. (62.5 sq.m.) approx.



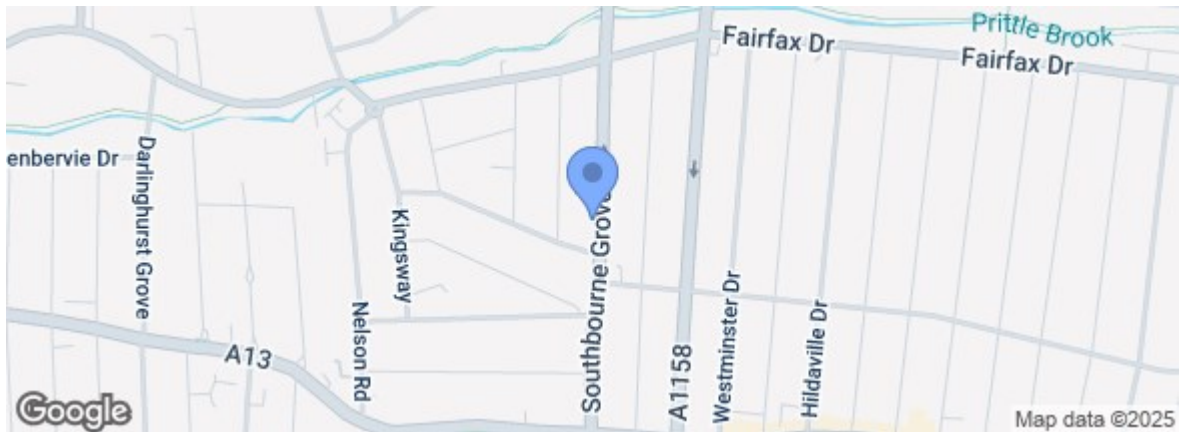
1ST FLOOR
607 sq.ft. (56.4 sq.m.) approx.



TOTAL FLOOR AREA: 1280 sq.ft. (118.9 sq.m.) approx.

Whilst every attempt has been made to ensure the accuracy of the floorplan contained here, measurements of doors, windows, rooms and any other items are approximate and no responsibility is taken for any error, omission or mis-statement. This plan is for illustrative purposes only and should be used as such by any prospective purchaser. The services, systems and appliances shown have not been tested and no guarantee as to their operability or efficiency can be given.
Made with Metropix C2025

Energy Efficiency Rating		Current	Potential
Very energy efficient - lower running costs			
(92 plus) A			
(81-91) B			
(69-80) C			
(55-68) D		55	75
(39-54) E			
(21-38) F			
(1-20) G			
Not energy efficient - higher running costs			
England & Wales EU Directive 2002/91/EC			
Environmental Impact (CO ₂) Rating		Current	Potential
Very environmentally friendly - lower CO ₂ emissions			
(92 plus) A			
(81-91) B			
(69-80) C			
(55-68) D			
(39-54) E			
(21-38) F			
(1-20) G			
Not environmentally friendly - higher CO ₂ emissions			
England & Wales EU Directive 2002/91/EC			



Under the Property Misdescriptions Act 1991 we make every effort to ensure our sales details are accurate but they are a general outline and do not constitute any part of an offer or contract. Any services, equipment and fittings have not been tested and no warranty can be given as to their condition. We strongly recommend that all the information provided be verified by your advisors and in particular, measurements required for a specific purpose such as fitted furniture or carpets. Please tell us if you have any problems and members of our branches will help either over the phone or in person. A copy of our complaints procedure is available on request. The details are issued on the strict understanding that any negotiations in respect of the property named herein are conducted through Aspire Estate Agents.